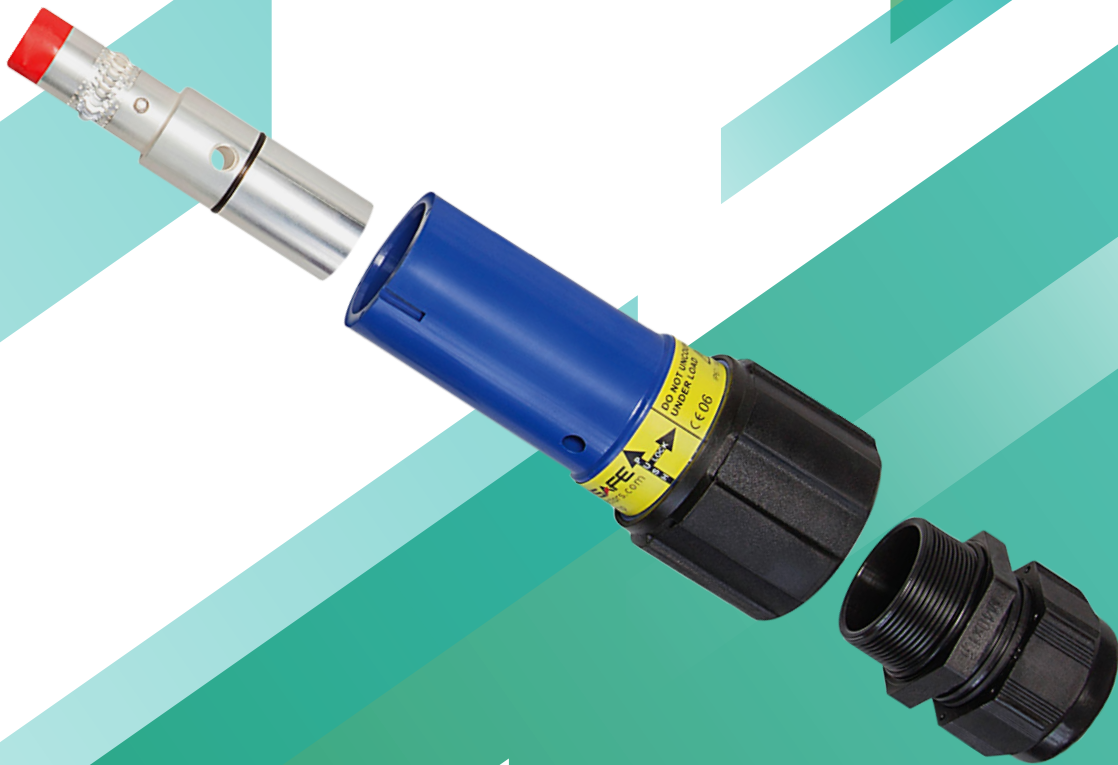




PHASE 3
CONNECTORS



POWERSAFE

POWER CONNECTOR ASSEMBLY GUIDE



www.p3connectors.com

Contents

1. Overview
2. Termination Methods
 - 2.1 Procedure for Set screw termination
 - 2.2 Procedure for Panel Mounted Connectors
 - 2.3 Crimp Termination
3. Safety and maintenance checks



1. Overview

Phase 3 Connectors strive to make sure that customers are 100% satisfied with our product. To do so we have written detailed procedures to guide you through the steps of correctly assembling and maintaining the product.

Due to the wide range of cable types available in today's market, to guarantee that an acceptable result is obtained when Powersafe Connectors are terminated to cables, the process for the variety of terminations has to be evaluated.

This procedure provides all the details of how to successfully terminate powersafe connectors, either by crimping, set screws or threaded post methods.

This Procedure tells you:

- How to perform a crimped termination
- The recommended crimp tools and dies
- How to perform a set screw termination
- How terminate a threaded post panel type connector
- Safety checks

The recommended assembly methods are detailed in the pages to follow. If in doubt please contact Phase 3 Connectors Ltd.

2. Termination Methods

There are three methods on how to terminate cables on the Powersafe contacts: Set Screw termination (page 2), Threaded Post termination (page 3) and Crimp termination (page 4).



2.1. Set Screw Termination Procedure

The recommended assembly procedure has been devised to show step-by-step how to terminate cables to our set screw contact. For a satisfactory termination it is essential that the recommended assembly procedure is used.

1. From the packaging: Remove the cable gland from the insulator and remove the contact.

2. Check the cable overall diameter. The standard Black M40A gland will facilitate cable diameter of 19-28mm. If your cable is of a diameter between 15-18mm diameter the PP00131 reduction bush supplied should be fitted to the M40A cable gland. To do this remove the black rubber sealing ring inside the rear of the gland and replace with the PP00131 M40S bush.

3. Slide the completed cable gland along the cable jacket.

4. With care, strip back the cable insulation 33mm. Try not to damage any of the conductor's stranding.

5. Fit the correct end sleeve or combination of end sleeves (see table below) over the conductor strands. Take care to ensure all the wire strands are inside the end sleeve.



End Sleeve Selection Guide Table

CABLE SIZE (MM ²)	REDUCTION SLEEVE	SET SCREW TORQUE MINIMUM	CABLE JACKET STRIP LENGTH
25	R120...R25	10.5 Nm	33mm
35	R120...R35	10.5 Nm	33mm
50	R120...R50	10.5 Nm	33mm
70	R120...R70	10.5 Nm	33mm
95	R120...R95	10.5 Nm	33mm
120/150	R120	10.5 Nm	33mm



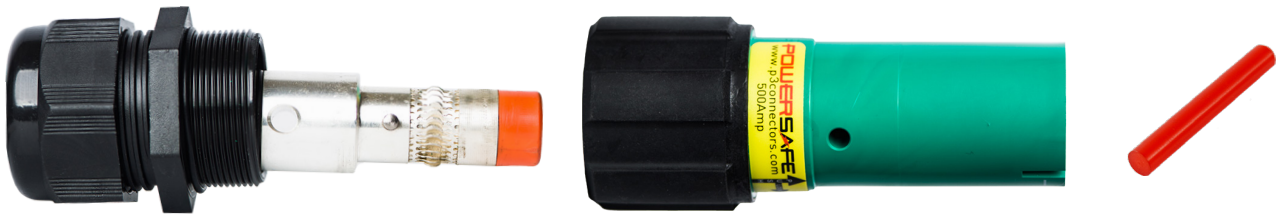
Using the table aside, select the appropriate reduction sleeves and slide in sequence on to the exposed conductor stranding. Please note; all sleeves down to the size recommended for the cable in use must be used.

i.e. For a 35mm² cable, the R120, R95, R70, R50 and R35 sleeves should all be used in sequence. All the sleeves fit perfectly inside each other to create a gradual reduction span. The flared end of the sleeves should be against the cable insulation.

6. Slide the cable and reduction sleeves into the back of the contact ensuring they are fully inserted inside the contact. Using a 5mm Allen bit, tighten the set screws in accordance with the table above.



7. Now insert the contact into the rear of the insulator and align the hole in the contact so that it is in line with the holes in the insulator.



8. Now align the dowel pin with the tapered end first with the hole in the insulator. The dowel pin is designed to be a tight interference fit with insulator hole and it is necessary to drive the pin using a hammer through the insulator and contact. When fully inserted the pin will be flush with the surface of the insulator body.



Dowel pins are designed to be used only once. In the event that the connector is unassembled a new dowel pin should be fitted on re-assembly.

Also, never use a dowel pin that is not a tight interference fit within the Insulator as this could lead to failure of the watertight barrier or allow the contact to dislodge from the insulator.

Periodic checks should be made to ensure security of dowel pins.

9. Now screw the cable gland onto the insulator and tighten the body and dome nut to 11Nm.



Your connector should now be complete and ready for an overall inspection.

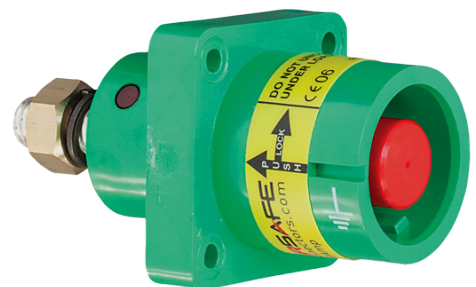
2.2 Panel Mounted Connectors Procedure

Panel connectors are supplied fully assembled and ready for direct mounting to equipment.

1. When the panel Connector is mounted in equipment: remove the nut and washer from the threaded post section.

2. Fit your selected terminal or accessory over the threaded area.

3. Refit the Washer and bolt on to the threaded area and tighten to a MAXIMUM of 12 - 14Nm.



2.3 Crimp Termination

It is important to use the recommended Crimp tool and Die to ensure a satisfactory crimp.



Tools Required:

- ME series Crimp Die
- Hand Held Crimping Tool: HT 131-C
- Cordless Hydraulic 14.4v Crimping Tool: B 131-C

A hydraulic crimping tool and hexagonal Die set is used to perform a crimp termination. Selection of the correct crimp die is essential to achieve a reliable result.



As cable conductor sections vary widely, the table below is intended as a guide to appropriate die selection.

Cable tensile test should be performed to ensure the final crimp termination meets the tensile and mv drop test of a particular specification.

Crimp Contact Dimensions and Die Selector

CABLE SIZE (MM ²)	INSIDE DIAMETER (MM)	OUTSIDE DIAMETER (MM)	TENSILE STRENGTH IEC61238-1	DIE SET CODE & (NO. OF CRIMPS)
25	7.0	9.4	1.500 N	ME 5 (2)
35	8.9	11.8	2.100 N	ME 07 (2)
50	10.0	13.0	3.000 N	ME 10 (2)
70	11.3	14.7	4.200 N	ME 14 (2)
95	13.5	17.6	5.700 N	ME 19 (2)
120	15.2	19.7	7.200 N	ME 24 (3)
150	16.8	21.6	9.000 N	ME 30 (3)
185	19.2	24.5	11.100 N	ME 37 (3)
240	21.1	25.4	14.400 N	ME 48 (3)
300	24.0	30.0	18.000 N	ME 60 (3)

The assembly of the Insulator and Glands is the same as previously described for the set screw terminations (page 2).

1. Select the appropriate Die set from the table above, (For example if you are using a 240mm² cable use Die set ME48).

2. Strip the cable jacket to leave 43mm of conductor exposed.

3. Slide the conductor into the rear of the contact. Take care to ensure all the wire strands are inside the contact.





4. Place the contact and cable carefully into the die set and close the crimping tool. In the case of tool HT131 the tool hands are pumped until they go no further. As the tool reaches the required compression you will feel and hear a click. The tool can then be opened to release the finished crimp.



Crimp 1 Crimp 2 Crimp 3

5. In some case more than one crimp is recommended to ensure the maximum surface area of crimp are achieved. From table 2 we can see for example that a 240mm crimp should be made in 3 equidistant positions along the contact crimp area.

3. Safety and Maintenance Checks

a) Check external surface of Insulators periodically for signs of cracks or breaks. If there are any signs of damage, then the insulator should be replaced.

b) Check cable glands for tightness. In use, cable glands can become loose and this could lead to water ingress, so periodic checking is essential.

c) Check condition and position of Cable gland seal within the cable gland. If any degradation is suspected a new seal or gland should be fitted.

d) With Drain connectors: check condition of the front O ring for signs of degradation. Also periodically a film of Silicone grease should be applied to the O ring surface. This will allow continued ease of mating and protect the O ring.

e) With Drain connectors: check the secondary locking pin which is spring loaded moves freely. It should travel fully down to the insulator surface and fully extend.

f) Check security and position of dowel pins. With a slight tap with a hammer the dowel pins should not move.

Following these steps above will ensure the long term safety and continued performance of your connectors.

** Replacement parts for service are readily available from the factory



WARNING!

Do not alter this product in any way. Doing so may lead to serious injury or death. Use copper conductors only. Read Instructions completely before wiring. Ensure all safety checks are carried out before and after use. This product should be installed, Inspected and maintained by qualified electricians only, in accordance with local and national electrical codes.



DID YOU KNOW

Phase 3 manufacture Sequential Mating Boxes for power distribution in the Powersafe range. Ask your sales rep



PHASE 3
CONNECTORS

POWERSAFE

Phase 3 Connectors HQ
Unit 7 Coopers Point
Coopers Lane, Knowsley, L33 7UB
Tel: +44 (151) 317 3860
Sales@P3Connectors.com

To the best of our knowledge, the information is correct at the time of printing. However, we cannot be held responsible for any errors made, or changes to the specification as part of ongoing refinements to our product range. E&OE. The rights and ownership of all trademarks are recognised.